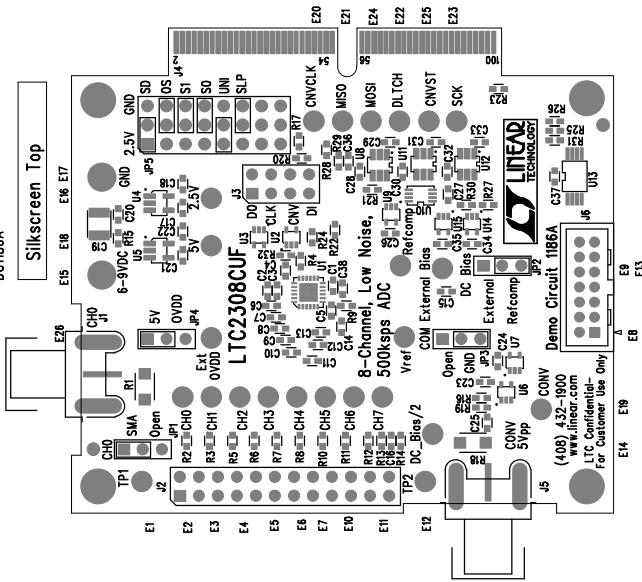
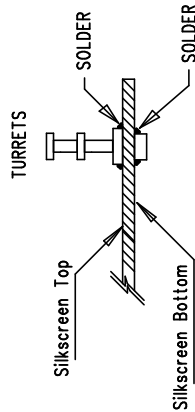


LINEAR TECHNOLOGY CORPORATION
DC1186A



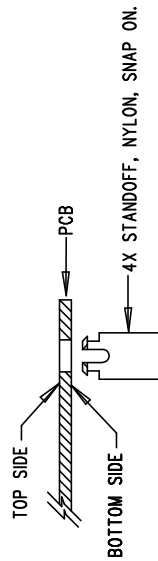
5. INSTALL TURRETS



Assembly Top Drawing

NOTES : Unless Otherwise Specified

1. BREAK BOARDS FROM THE PANEL WHEN ASSEMBLY IS COMPLETE.
2. OPTIONAL COMPONENTS ARE UNSTUFFED AND SHOULD BE COVER WITH SOLDER AFTER ASSEMBLY. (NO EXPOSED PADS)
3. JUMPER SHUNTS INSTALLATION: JP1- SMA, JP2 - Refcomp, JP3 - GND, JP4 - 5V, JP5- for SD-2.5V, for OS-GND, for SI-GND, for SO-GND, for UNI-2.5V, for SLP-GND
4. INSTALL 4 STANDOFFS AT 4 CORNERS AS SHOWN BELOW:



APPROVALS

DRAWN	INIT	DATE
CHECK		
DESIGN	Antonina K	
ENGR	Guy Hoover	
SIZE	NONE	REV. 2
SCALE	= NONE	
DES-230730		SHT 1 of 1



1630 McCarthy Blvd.
Milpitas, CA 95035
PH: (408)432-1900

TITLE: LTC2308CUF
8-Channel, Low Noise, 500kspcs ADC

8-Channel, Low Noise, 500kspcs ADC

SIZE NONE REV. 2

DES-230730 SHT 1 of 1